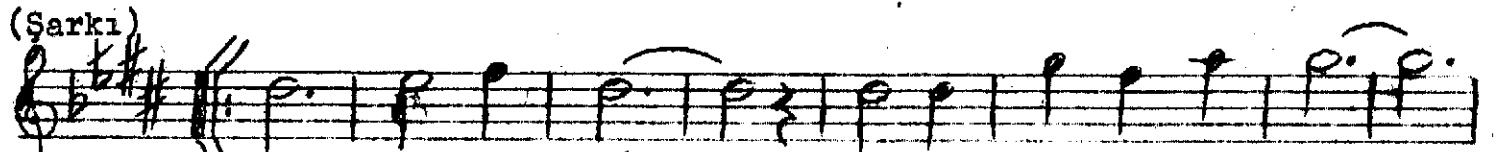
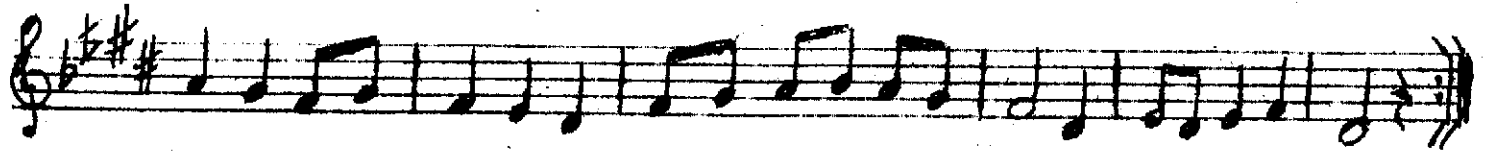
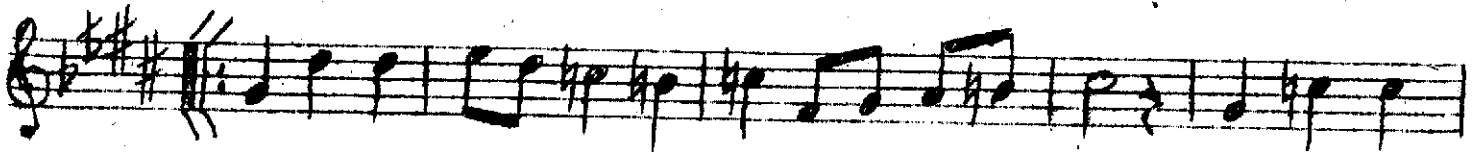
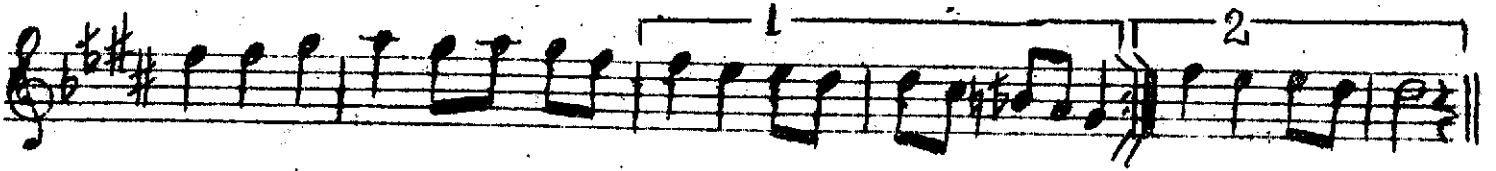
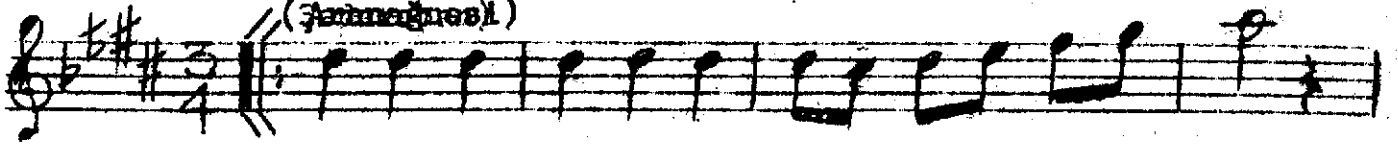


ŞEDARABAN ŞARKI

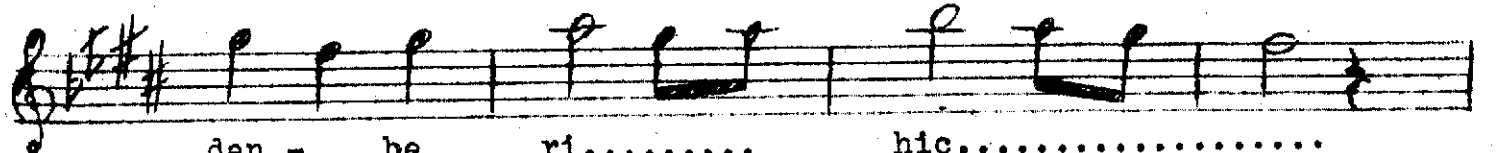
Muallim İsmail Hakkı Bey
(Bestekârın el yazısından)

Senâî

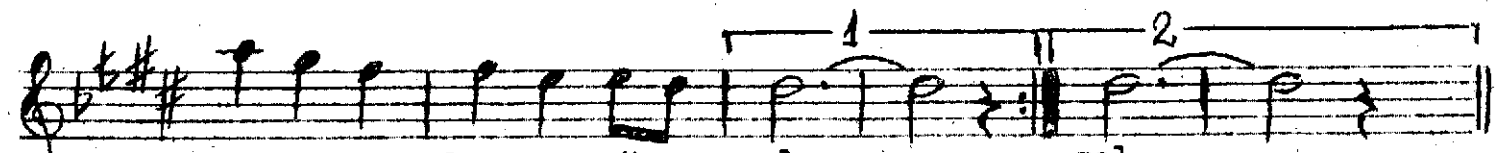
(Anmağnesi)



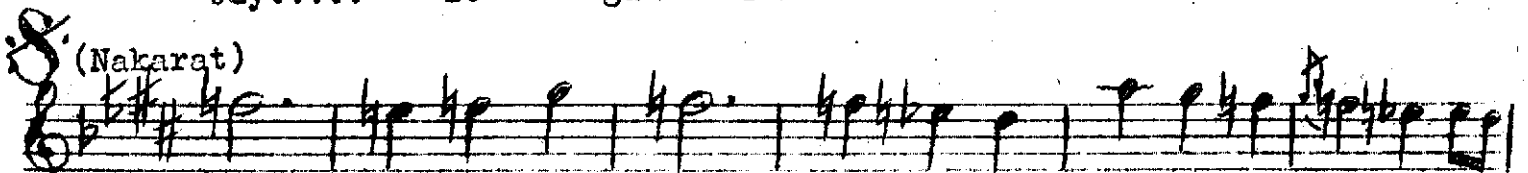
Gö rül me niş dev ri Yu suf



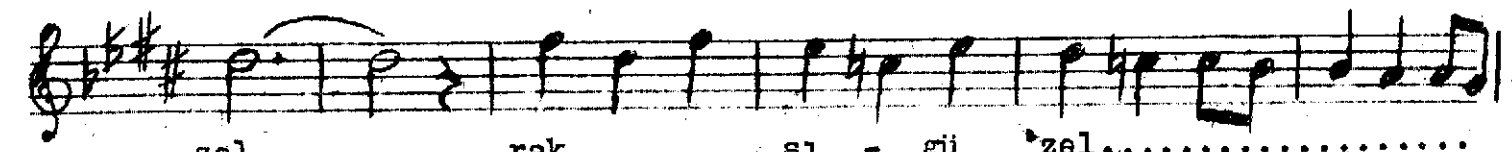
dan - be ri..... hiç.....



böy..... le - gü zel zel



Tav ri - gü zel..... se..... sı.. gü



zel rak..... sı - gü zel.....



ah... o gü zel Tav rı - gü zel

se sı - gü zel rak sı gü

zel..... ah ... o gü zel

Meyana

Ken di ya nar..... a... ..

te - şî ne yak dı 1 be

ni..... ah..... o - gü

zel zel

Görülmeniş devr-i Yusuf'dan beni hiç böyle güzel
Tavrı güzel, sesi güzel, raksı güzel, ah o güzel
Kendi yanar âteşine yakdı beni ah o güzel
Tavrı güzel, sesi güzel, raksı güzel, ah o güzel.